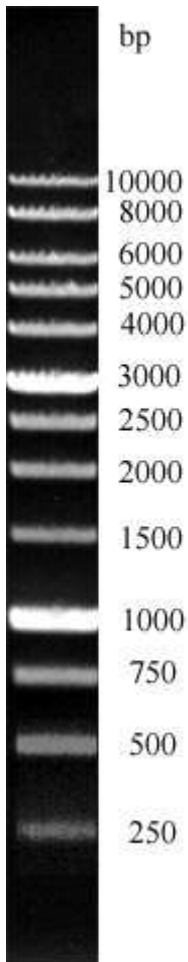


## 1kb DNA Ladder BLUE (ready-to-use)

**Features:** 1000 bp / 1 kb DNA Marker from GeneON is composed of 13 individual DNA fragments which are re-dissolved in storage buffer.



**Description/Preparation:** The 1 kb BLUE DNA Marker is a pre-mixed, ready-to-load molecular weight marker containing a dye which serves as visual aids to monitor the progress of migration during agarose gel electrophoresis. The DNA marker consists of proprietary plasmids which are digested to completion with appropriate restriction enzymes to yield 13 bands suitable for use as molecular weight standards for agarose gel electrophoresis that range in size from 250 to 10.000 base pairs. The 1.000 bp and 3.000 bp fragments have increased intensity relative to the other bands on ethidium bromide-stained agarose gels and serve as reference indicators. All fragments are blunt-ended.

**Usage:** 0.25 - max. 1 µg/lane

**Concentration:** 0,1 µg/µl

**Storage Buffer/Tracking Dye::** 10 mM Tris-HCl (pH 8.0), 1.0 mM EDTA, 50mM NaCl, optimized blue loading dye

**Number of bands:** 13 fragments

*Gel-picture: 1 µg of 1000 bp/1 kb DNA Ladder visualized by ethidium bromide staining on 1,0 % TAE agarose gel*

### Number of bands and approx. DNA Mass:

base pairs	250	500	750	1000	1500	2000	2500	3000	4000	5000	6000	8000	10000
DNA mass ng	20	30	60	210	50	60	70	200	60	60	60	60	60

**Loading:** 0.25 - max. 1.0 µg/ lane in 1.0 - max. 2.0 % Agarose

**Transportation:** shipped on blue ice or room temperature

**Storage:** at -20°C for 24 months

### Ordering Information:

Cat.-no	Description	Amount
305-105	1000 bp / 1kb Ladder BLUE	50 µg/500 µl
305-125	1000 bp / 1kb Ladder BLUE	5 x 50 µg

*.. a good decision ..*

**GeneON .. a good decision ..**

Contact Phone +49-(0)-621- 5720 864 Fax: +49-(0)-621-5724 462

**E-Mail:** <mailto:info@geneon.net> **WEB:** <http://www.taq-dna.com/> Version: 25.10.2009 AS

Unless specified otherwise, all products of GeneON are sold for research use only.